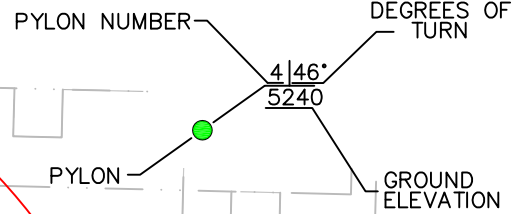


UNLIMITED CLASS OPTIMUM RACE PATH CRITERIA = 500 MPH @ 4G's



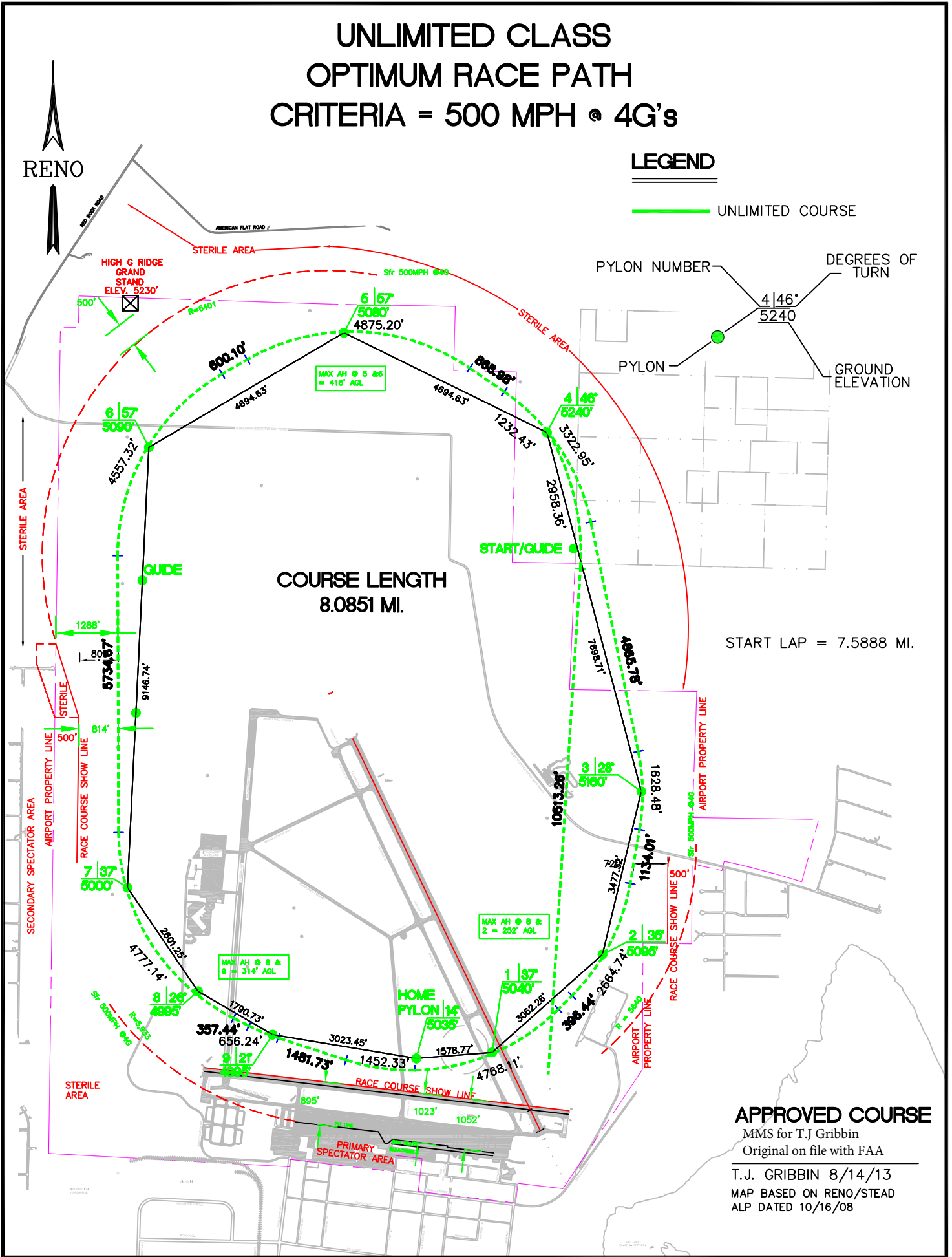
LEGEND

——— UNLIMITED COURSE



**COURSE LENGTH
8.0851 MI.**

START LAP = 7.5888 MI.



APPROVED COURSE

MMS for T.J Gribbin
Original on file with FAA

T.J. GRIBBIN 8/14/13
MAP BASED ON RENO/STEAD
ALP DATED 10/16/08

2015 OPTIMUM RACE PATH



RENO

- - - - - **FORMULA ONE COURSE**
3.1875 MILES
- - - - - **BIPLANE COURSE**
3.3417 MILES
- - - - - **T-6 COURSE**
4.9352 MILES

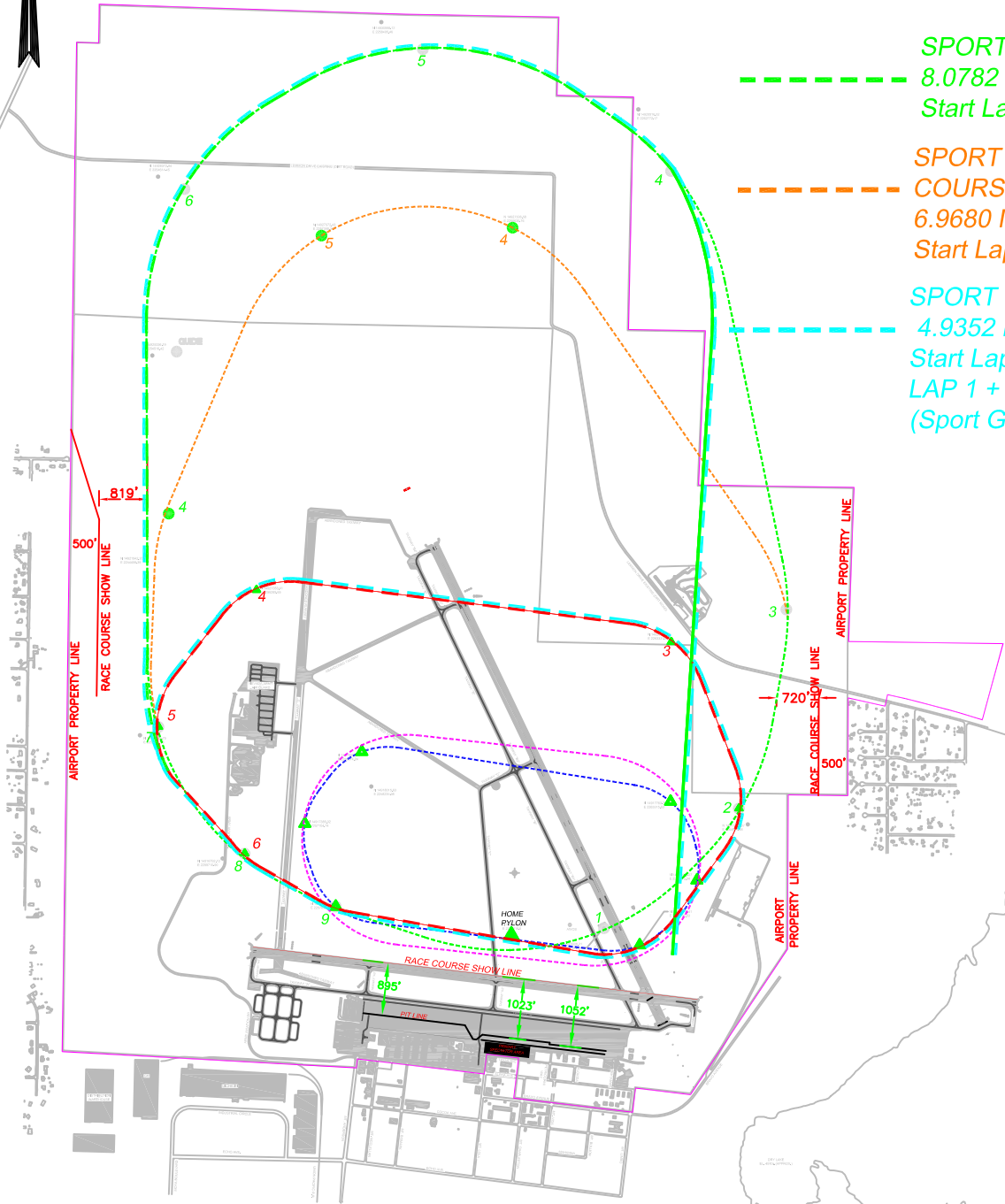
- - - - - **UNLIMITED COURSE**
8.0851 MILES
Start Lap = 7.5888 MILES

- - - - - **JET COURSE**
8.1025 MILES
Start Lap = 7.6113 MILES

- - - - - **SPORT GOLD COURSE**
8.0782 MILES
Start Lap = 7.5934 MILES

- - - - - **SPORT Silver & Bronze COURSE**
6.9680 MILES
Start Lap = 7.5660 MILES

- - - - - **SPORT MEDALLION COURSE**
4.9352 MILES
Start Lap = 7.5858 MILES
LAP 1 + 2 = 12.5210 MILES
(Sport Gold + T-6 Course)



APPROVED COURSE

Matthew Setty

M. SETTY 7/1/2015