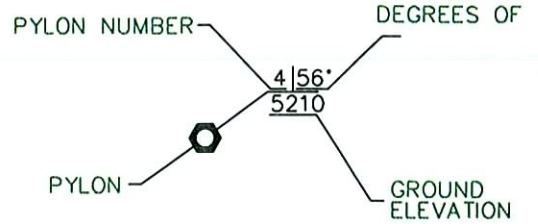


SUPER SPORT CLASS OPTIMUM RACE PATH CRITERIA = 400 MPH @ 3.0 G's

LEGEND

 SPORT COURSE

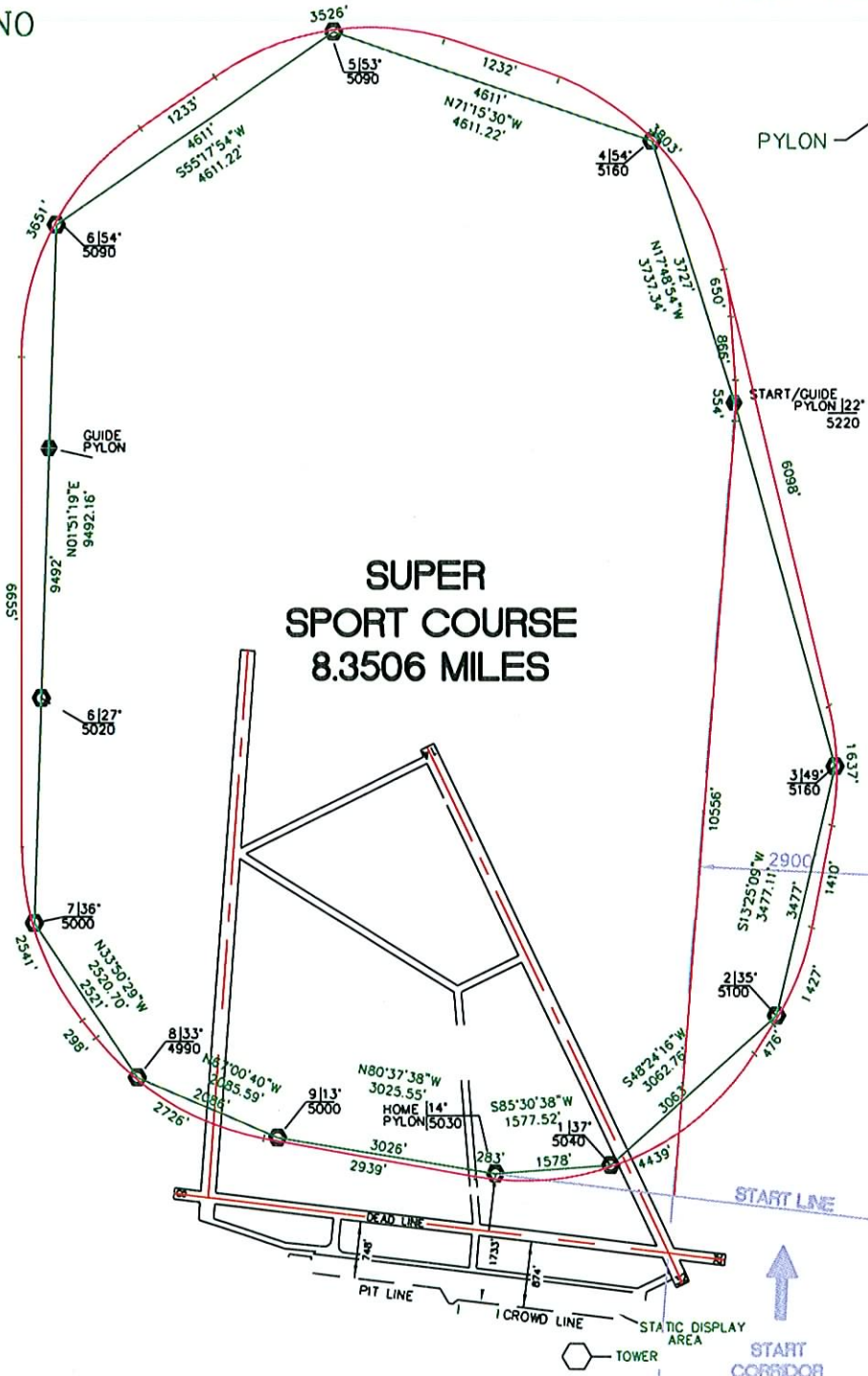


**SUPER
SPORT COURSE
8.3506 MILES**

START LAP = 7.8623 MI.

DEAD LINE

DEAD LINE



DATED 9/14/09 T.J.G./MEG
airrace 2008 super sport.dwg